

Flashcards

1 bull
 2 cow
 3 cat
 4 duck
 5 rooster
 6 hen
 7 sheep
 8 donkey
 9 farm
 10 dad
 11 mom
 12 brother
 13 sister
 14 grandfather
 15 grandmother
 16 orange
 17 red
 18 yellow
 19 green
 20 black
 21 blue
 22 purple
 23 pink
 24 brown
 25 gloves
 26 cap
 27 T-shirt
 28 shirt
 29 jacket
 30 shorts
 31 jeans
 32 skirt
 33 dress
 34 Sunday
 35 Monday
 36 Tuesday
 37 Wednesday
 38 Thursday
 39 Friday
 40 Saturday

41 pineapple
 42 pear
 43 grapes
 44 mango
 45 onion
 46 carrot
 47 potato
 48 tomato
 49 chicken
 50 cake
 51 eye
 52 nose
 53 mouth
 54 ear
 55 hair
 56 arm
 57 hand
 58 leg
 59 foot
 60 teeth
 61 clock
 62 breakfast
 63 lunch
 64 dinner
 65 wake up
 66 go to bed
 67 January
 68 February
 69 March
 70 April
 71 May
 72 June
 73 July
 74 August
 75 September
 76 October
 77 November
 78 December

Words are grouped by units.

Do it yourself!

Elfin Flashcards

Step
1

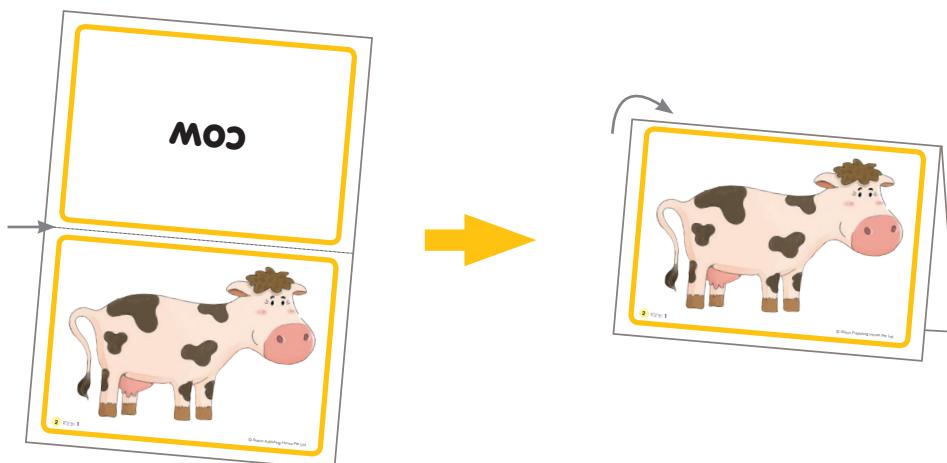
Print the flashcards.



Note: Go to print options. Under Page Scaling, select "Fit to Printable Area" and "Auto-Rotate and Center." Choose "One-Sided Print."

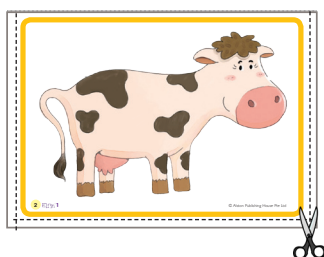
Step
2

Fold each piece of printout along the dotted line.



Step
3

Trim the border if necessary.



Step
4

Glue, tape, or staple edges together. And Voila! You have an *Elfin Flashcard* in your hands.

Teaching with Flashcards

Elfin Flashcards are thoughtfully designed teaching tools that enable teachers to effectively introduce new words to students. The words and pictures are placed on different sides of an *Elfin Flashcard*. This helps students with word recognition. Below are some practical ways to use *Elfin Flashcard* to make learning English an exciting experience.

- 1) Hold up an *Elfin Flashcard* and say the word clearly. For example, say "A cat." or simply "Cat." Repeat the word two to three times. Get the class or individual students to say the word.
- 2) Hold up an *Elfin Flashcard*. Show students the word and spell it. For example, say "C-A-T. Cat." Write it on the board if necessary. Repeat the spelling two to three times. Then flip the *Elfin Flashcard* to show the picture and erase the spelling from the board. Ask students to spell the word.
- 3) Hold up an *Elfin Flashcard* to show a picture. Ask "What is this?" or "Is this a(n) _____?" (An incorrect word can deliberately be inserted here. Students should respond with, "No, it isn't. It is _____.")
- 4) Give each student an *Elfin Flashcard*. Ask them to raise their *Elfin Flashcard* when they hear the word being read out.
- 5) Put a few *Elfin Flashcards* on the board. Make sure the pictures are on display. Get students to write the words corresponding to the pictures on the board. Replace the *Elfin Flashcards* and get another set of students to do the same.
- 6) Put a few *Elfin Flashcards* on the board. Make sure the pictures are on display. Get students to point to the picture of the word you read out.

Tips:

- Use the picture when introducing a word for the first time.
- Avoid introducing too many new words to students at one time.
- Keep track of words students have difficulty with.

Fun with Flashcards

Here are some games that will reinforce students' vocabulary while they have fun.

Sketch and Guess

Divide the class into half. Hand an *Elfin Flashcard* to a representative from one group. Without speaking or writing letters, the student must get his/her group members to guess the correct word by drawing on the board. If, after one minute, no one guesses correctly, the other group is allowed to guess. Award points accordingly. Bonus points can be awarded to the group that can spell the word correctly. (Variation: gesture or mime the word instead.)

Broken Telephone

Divide the class into groups of five to eight. Get each group to stand in a line facing one direction. Give the last student an *Elfin Flashcard*. The student, starting from the last one, must whisper the word/phrase to the student directly in front. When the word reaches the first student, he/she will say the word/phrase aloud. (Variation: mime or gesture the word instead.)

A Story Train

Hand out *Elfin Flashcards* to the students. A student will start a story by saying a sentence or two using the *Elfin Flashcard(s)* in his/her hands. Students will take turns to continue the plot of the story using their *Elfin Flashcards*. Allow students to stretch their imagination. Moderate as necessary. (Simplification: instead of telling a story, get students to form a sentence using the words on the *Elfin Flashcards* they received.)

Make a Match

Select the *Elfin Flashcards* in advance. Hand out the flashcards. Get students to look for other students who have *Elfin Flashcards* with words from the same category as that they are holding. Once they have found the other "members," each group will have to tell the class what the category is. For example, "clothes" or "colors." (Simplification: put up a few *Elfin Flashcards* on the board and get students to match the words they have to the ones on the board.)

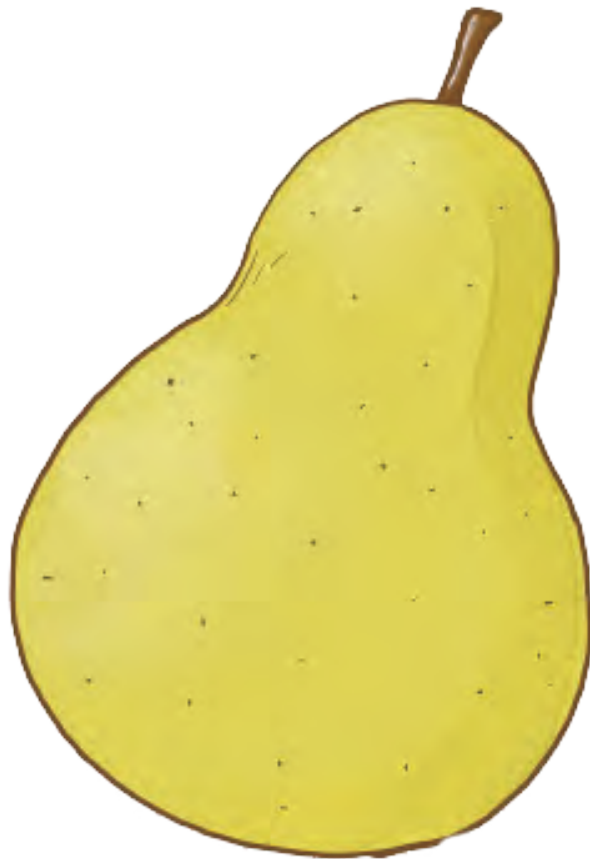
Say Anything but This

Divide the class into groups of five. Hand out the *Elfin Flashcards*. Students must hide their words from the other students. Each student will be given one minute (or less) to describe the meaning of the word. Students must get their group members to guess the correct word without saying the actual word. The team with the greatest number of correct guesses wins.

pineapple



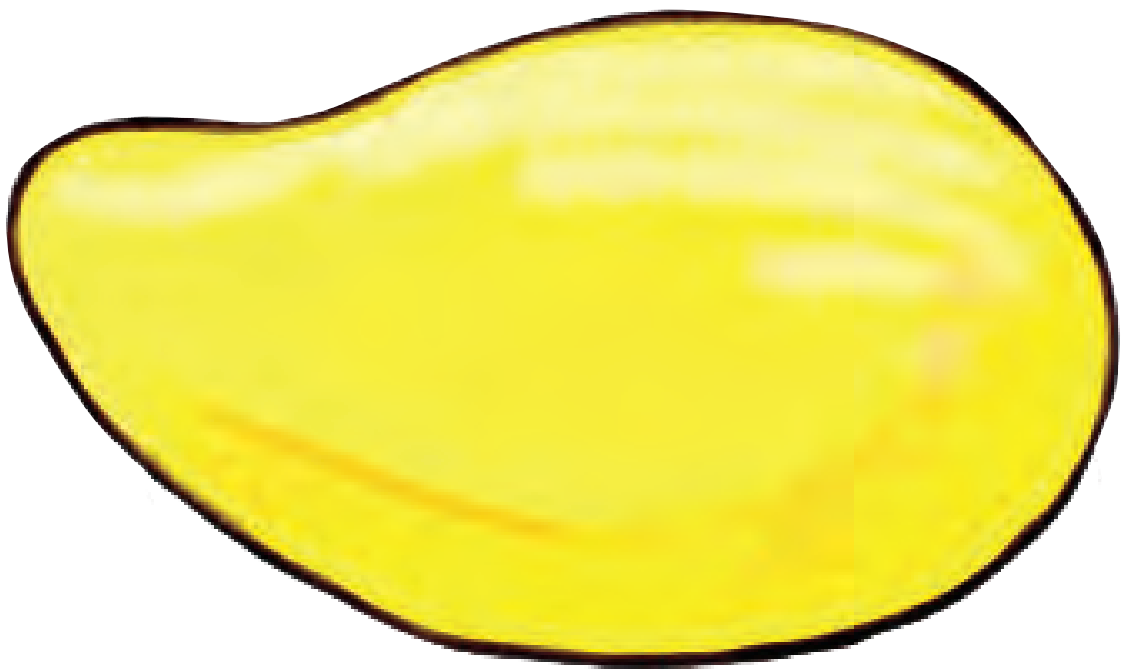
pear



grapes



mango



onion



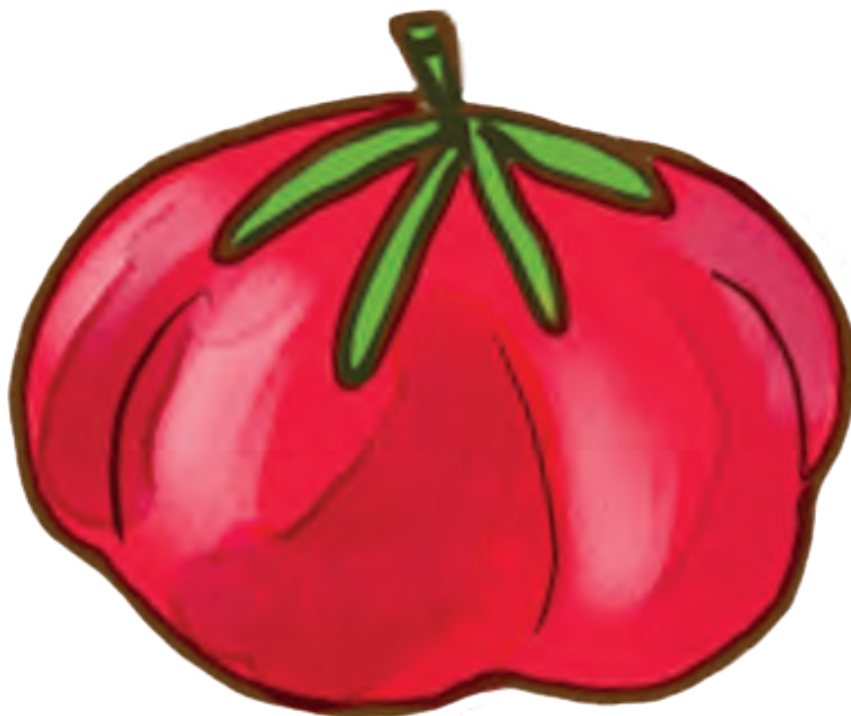
carrot



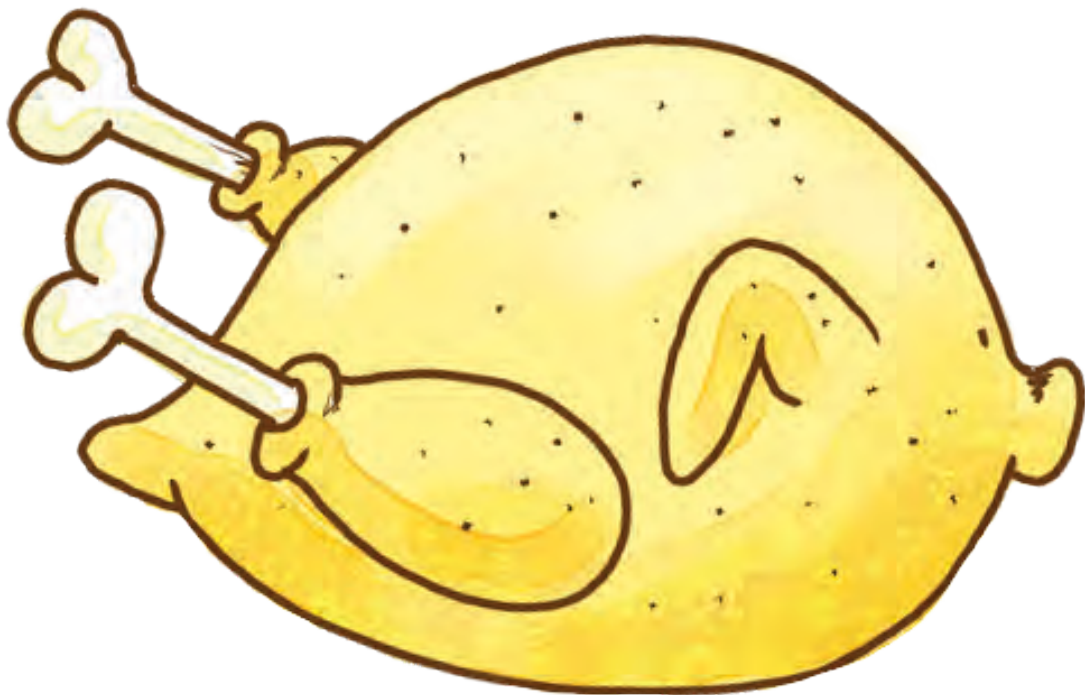
potato



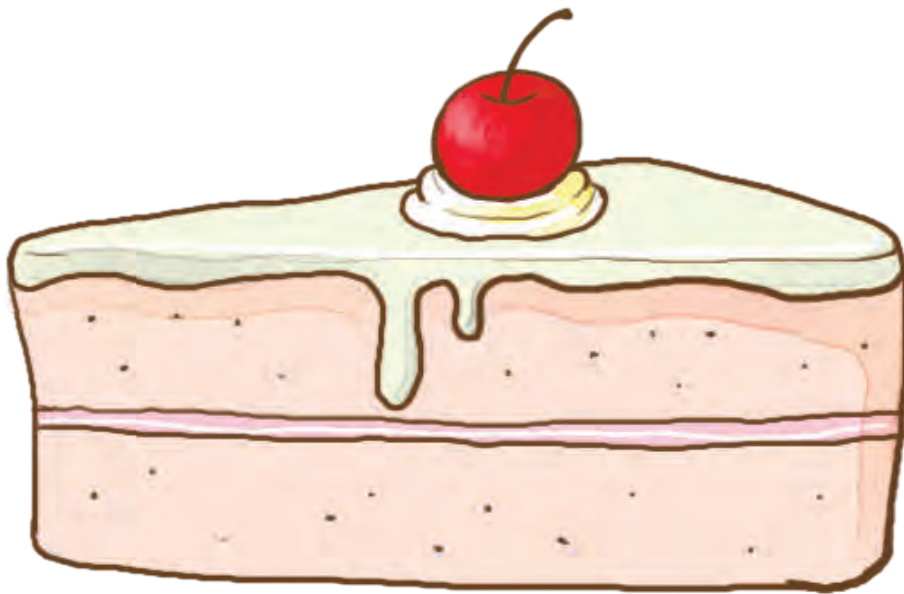
tomato



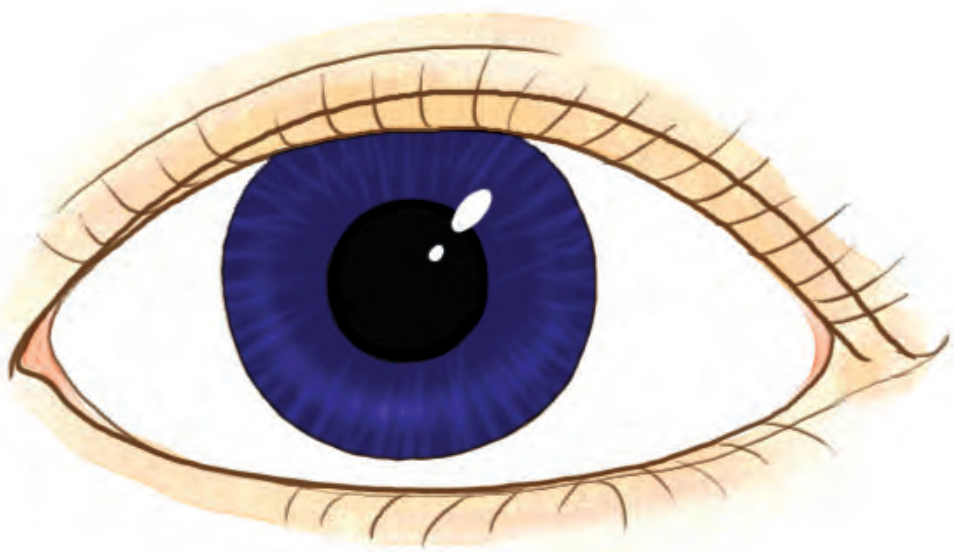
chicken



cake



eye



nose



mouth



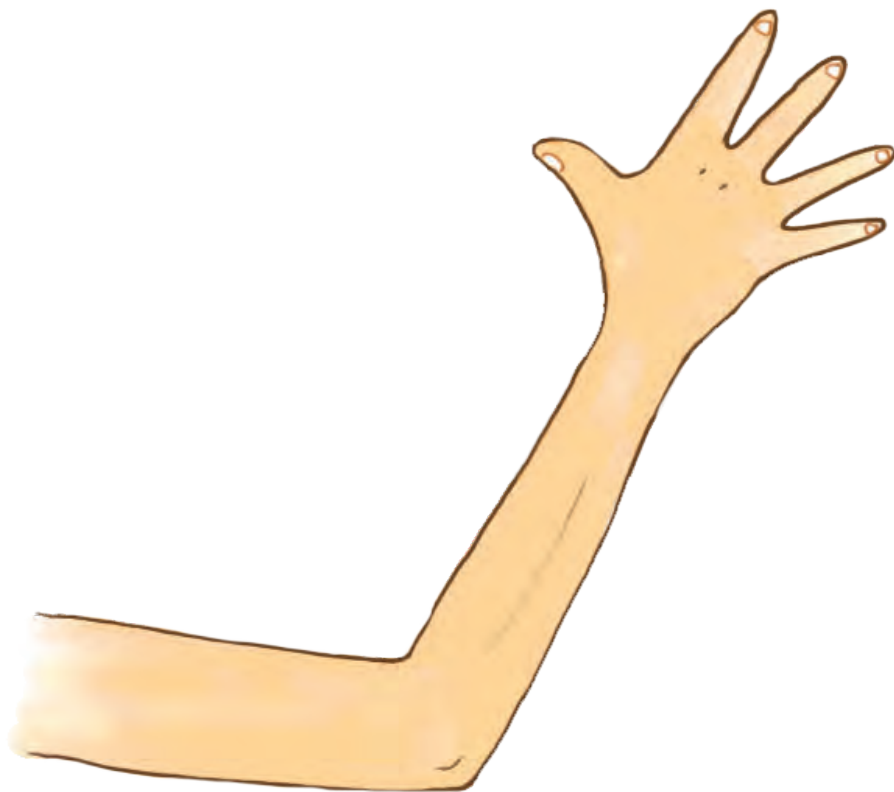
ear



hair



arm



puṇḍ



leg



foot



teeth



clock



breakfast



lunch



dinner



wake up



go to bed



January



February



March



April



May



əunɪ



Λιου



August



September



October



November



December

